



terra
by
bptp
culture}movement

terra
by
bptp
culture}movement

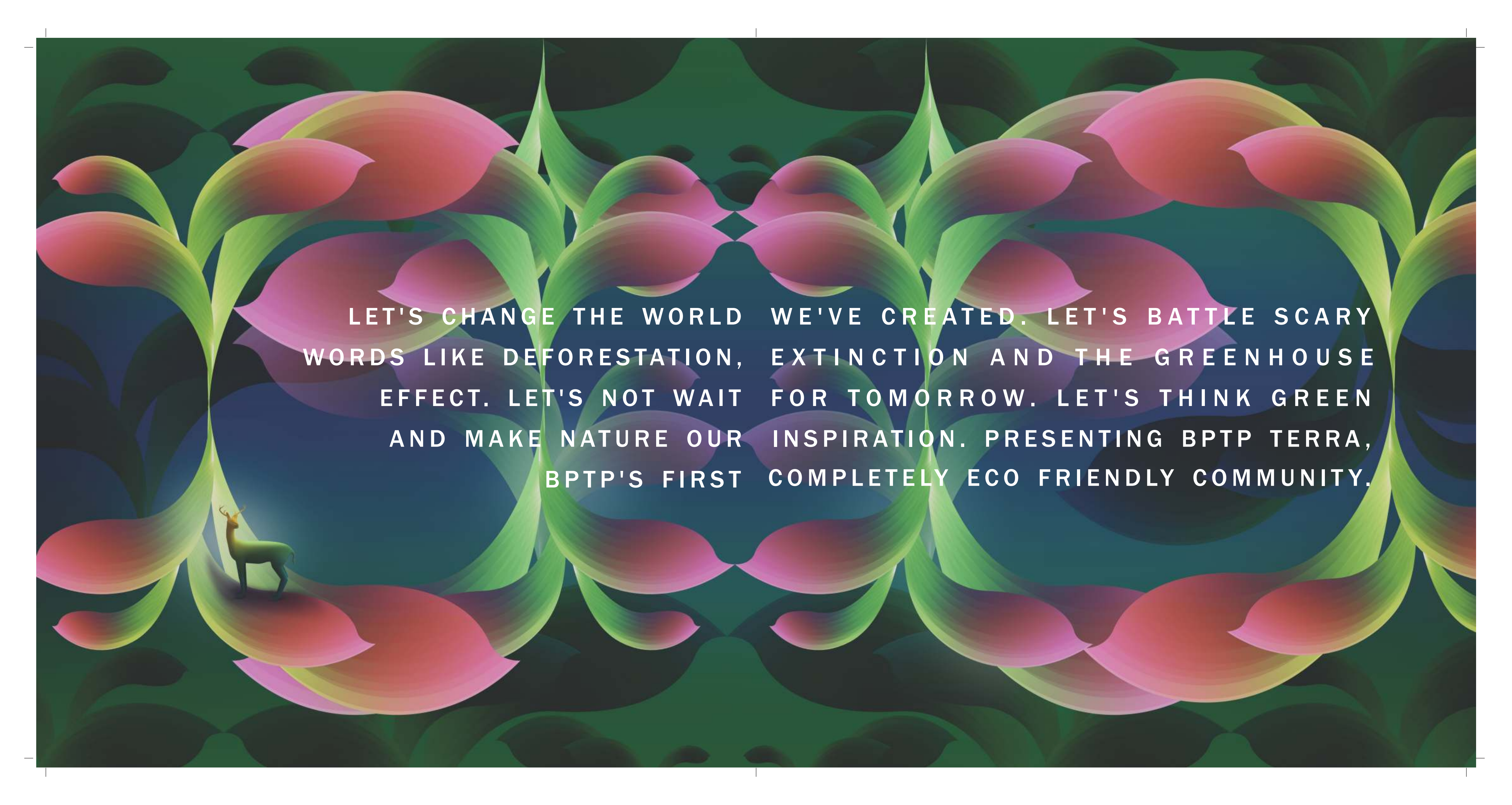
+91-9250933366

www.bptp.com

sales@bptp.com

BPTP Crest 15, Udyog Vihar, Phase IV, NH-8, Gurgaon-122015, Haryana, India. Tel +91-124-3852787, Fax +91-124-3852999

M/s Countrywide Promoters (P) Ltd, an associate Company of M/s BPTP Limited, obtained two Licenses bearing no. 83 dated 05/04/2008 and no. 94 dated 24/10/2011 from the Department of Town and Country Planning, Chandigarh, Haryana for setting up a Group Housing on combined land measuring 43.558 Acres situated in Sector 37D, Gurgaon. The Building plans of Group housing 43.558 Acres having total 2688 nos of dwelling units (including EWS) are approved "in-principle" by the DTCP vide memo no. 18868 dated 21/09/12. There is also a provision of 1 no. High school, 2 nos Primary schools, 2 nos Nursery schools, 1 no. Community centre, 1 no. Religious building, 1 no. Crèche, 1 no. Dispensary, 1 no. Sub Post Office and shopping area. The development phase namely project "Terra" falls in above License(s) and the copies of Licenses / Permissions are placed in the Company's office for references. The Site plan and Unit plans are subject to changes that may occur during course of construction based on the working drawings which shall be regularized by the Company, Architects and developers reserve the right to alter the specifications and facilities for design improvement. This communication is purely conceptual and not a legal offering. The developer reserves the right to amend/alter the area, layout, elevations, specifications and amenities. Elevation, photographs/images used in the advertisement are purely artistic in nature and tend to change with/without prior notice.



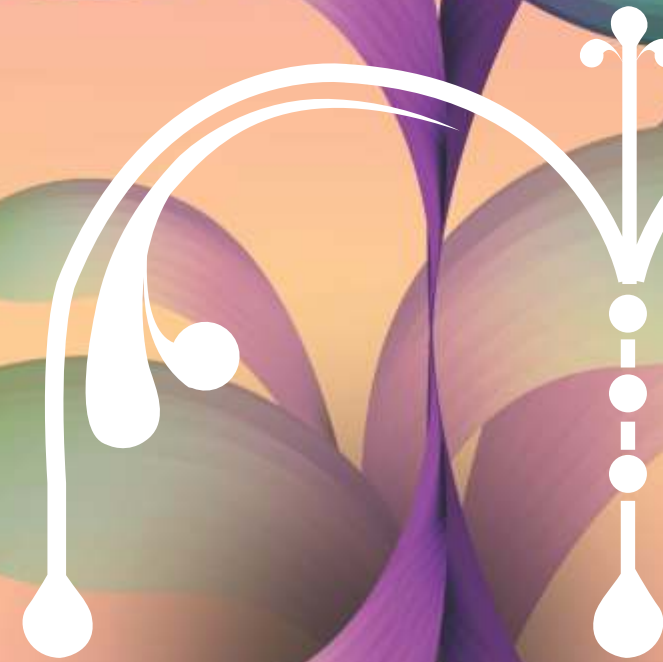
LET'S CHANGE THE WORLD WE'VE CREATED. LET'S BATTLE SCARY
WORDS LIKE DEFORESTATION, EXTINCTION AND THE GREENHOUSE
EFFECT. LET'S NOT WAIT FOR TOMORROW. LET'S THINK GREEN
AND MAKE NATURE OUR INSPIRATION. PRESENTING BPTP TERRA,
BPTP'S FIRST COMPLETELY ECO FRIENDLY COMMUNITY.

PERFECTED
ARCHITECTURE
IN AN UNTOUCHED
SURROUNDING.



ARTISTIC IMPRESSION

FOR
THE
PLANET
WE CALL





WAKE UP
TO
GREENER
PASTURES

The grass is always greener on the other side. Or so it's been, till now. Because when you wake up every morning at Terra, you'll realize that the footprint you've left behind is a lot smaller, and the world is just that little bit better.

A woman with blonde hair is relaxing in a large white bathtub on a beach. The scene is set at sunset, with the sky transitioning from orange to blue. The bathtub is placed on the sand, and the ocean is visible in the background. The overall mood is serene and peaceful.

LET
NATURE
REFRESH
YOU

There's nothing like waking up to a cold shower in the morning, or coming back to that warm, soothing soak at night. And when both make you feel like a part of nature, they become the moments you look forward to everyday.



SIT BACK
IN
NATURE'S
ARMS

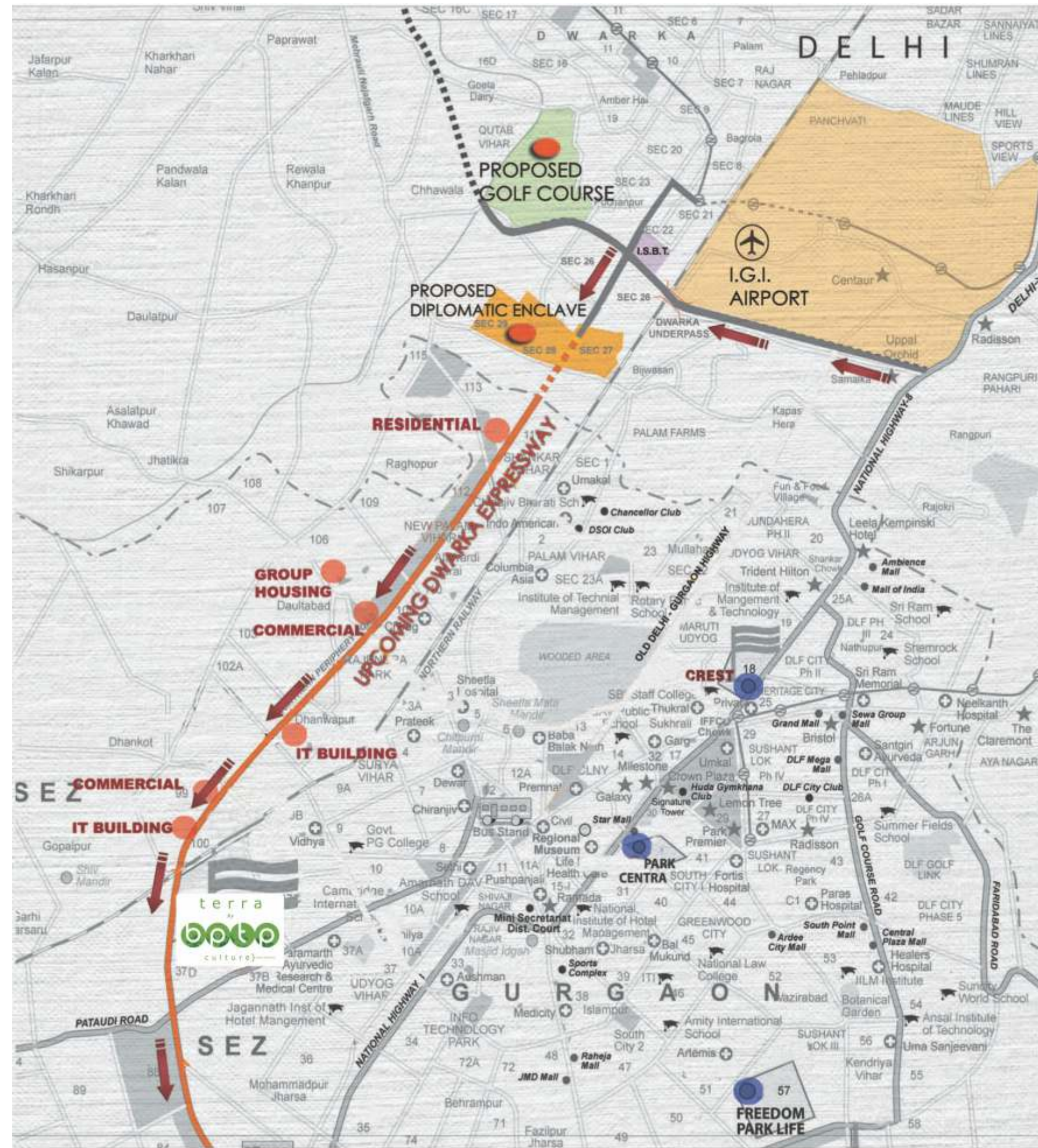
There are times when nothing is better than sitting down for a conversation with the family, while the kids run around you. Or when that friend calls out of the blue and you relive old times. At Terra, those moments will be special for you, and the planet.



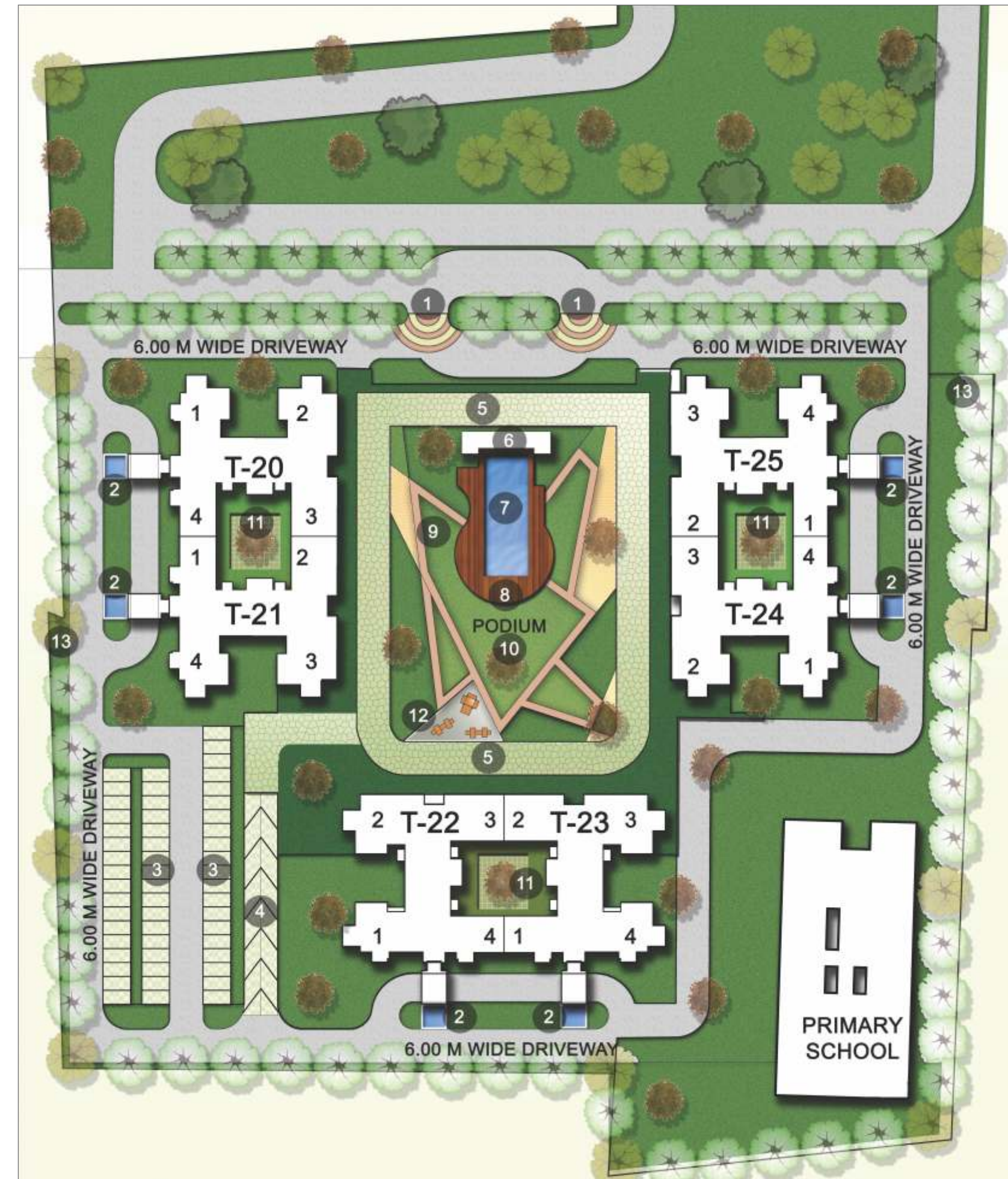
GATHER IN THE
L A P O F
N A T U R E

Sometimes, a guy's night in is just what the doctor ordered. When you meet for that glass of something stronger, and a little small talk. Or when husbands are banned and gossip is the norm. At Terra, your world will laugh with you.

LOCATION MAP



SITE PLAN



- LEGEND
1. Entrance Paved Area
 2. Water Feature
 3. Parking
 4. Ramp to Podium
 5. Fire Tender Path
 6. Changing Room
 7. Swimming Pool
 8. Pool Deck
 9. Pathway
 10. Lawn
 11. Courtyard
 12. Children's Play Area
 13. Peripheral Green

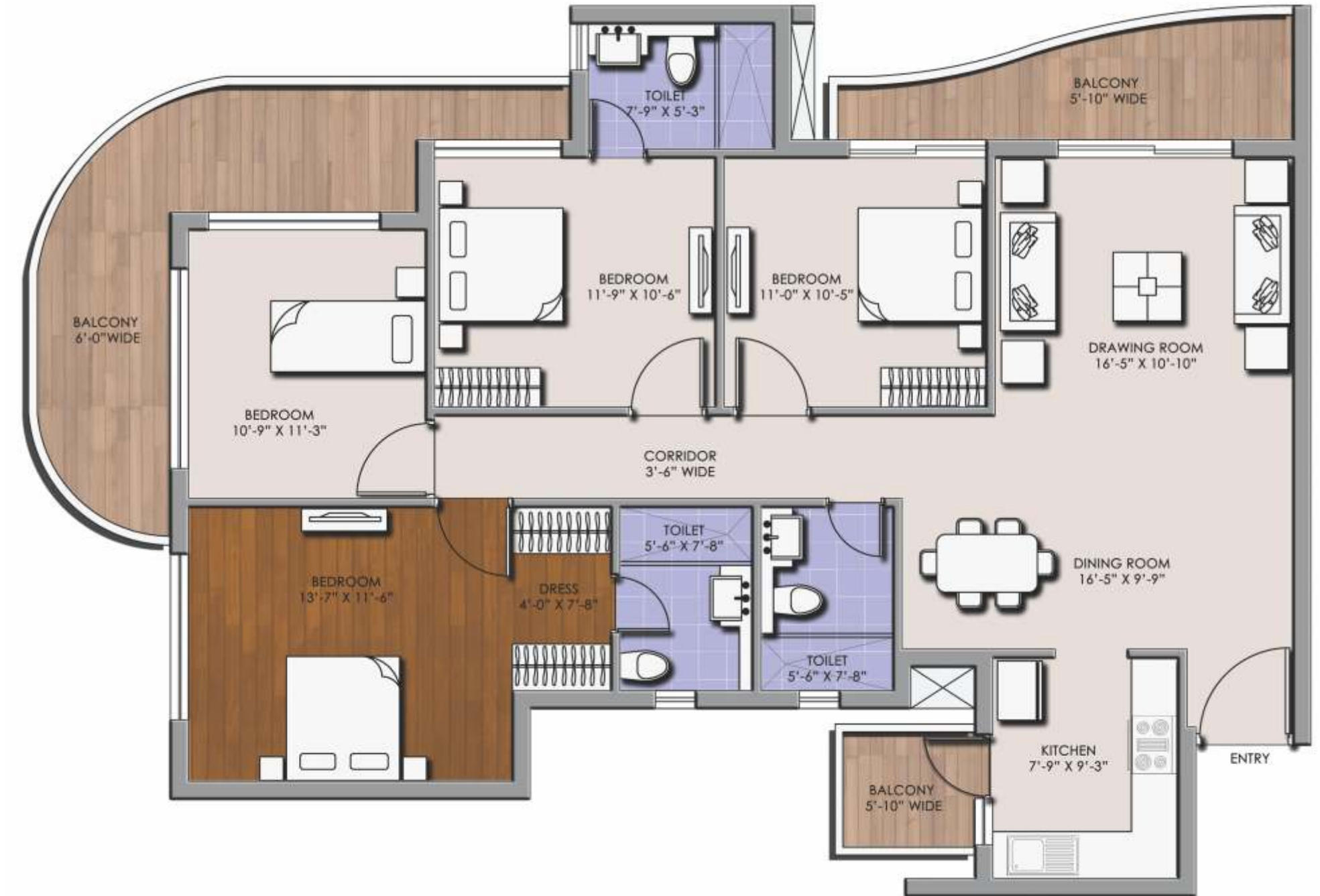
FLOOR PLAN

3 BHK
1691 SQ. FT.



FLOOR PLAN

4 BHK
1998 SQ. FT.



SPECIFICATIONS

LIVING/DINING ROOM

- Acrylic emulsion paint, cove lighting
- Imported marble
- POP punning with acrylic emulsion paint
- Polished skin doors with stainless steel butt hinges and with hardwood door frames
- UPVC windows
- Split air conditioner
- Modular switches/sockets, telephone, cable TV



KITCHEN

- Imported designer tiles up to 2' above working granite counter and up to 5' on other walls
- Anti-skid imported tiles
- POP punning with acrylic emulsion paint
- Polished skin doors with stainless brass/steel butt hinges and with hardwood door frames
- UPVC windows
- Modular kitchen with double bowl stainless steel sink, single drain board, branded chrome plated fixtures and granite counter



MASTER BED ROOM

- Acrylic emulsion paint
- Laminated wooden flooring
- POP punning with acrylic emulsion paint
- Polished skin doors with stainless steel butt hinges and with hardwood door frames
- UPVC windows
- Split air conditioners of 5-star rating, modular wardrobe / cupboard
- Modular switches/sockets, telephone, cable TV and internet socket

BATHROOMS

BATHROOMS

- Grohe CP fittings
- Duravit / Gebrüt fixtures.



BALCONIES/TERRACES

- Weather proof paints
- Anti-skid ceramic tiles with skirting
- Weather proof paints
- Polished skin doors with stainless steel/brass butt hinges and with hardwood door frames
- UPVC windows
- Modular switches





ARTISTIC IMPRESSION

A B I T
A B O U T
B P T P

The last decade has witnessed the growth of BPTP, one of the most prolific real estate companies in the National Capital Region. Driven by the twin pillars of operational excellence and unparalleled customer experience, our endeavour is to create best in class and sustainable developments.

In just 9 years, we have successfully turned Faridabad into an incredibly promising real estate market, with our flagship project Parklands, a fully integrated township. In Gurgaon, we have created perfect examples of integrated luxury townships - Amstoria and Astaire Gardens and established a new genre of "Affordable Luxury" housing in the NCR. While Capital City NOIDA, our marquee mixed use project is poised to set a bench mark in the Indian realty market.

Our core strengths are identifying opportunities before others, developing and successfully executing them. We have set our sights on a future which holds even greater promise as our company strives to achieve new heights.



THE RESORT*



VISIONNAIRE VILLAS**



CAPITAL CITY**



BPTP CREST*



PARK GRANDEURA*



AMSTORIA**

*Actual Image **Artistic Impression